



DRT SERIES

SINGLE-PHASE FILTERS FOR INVERTERS

COMPONENTS

PART NO.	Cx1 (uF)	Cx2 (uF)	Cy (nF)	L (mH)	Lg (uH)	R (K)
16DRT1W3A	1.0	0.68	4.7	1.7	32	200
*30DRT1W3	2.2	1.0	10	2.2	-	

*UL APPROVED

INTRODUCTION

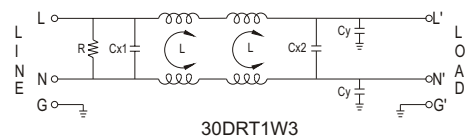
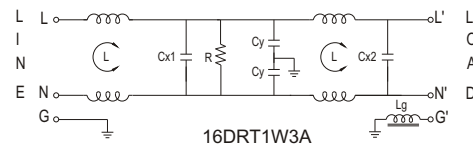
1. Applications: Electric equipment, UPS, machine tool, copy machine, automation equipment, robot, AC motor drive
2. Voltage rating: 250VAC
3. Operating frequency: 50/60Hz

MINIMUM INSERTION LOSS IN

PART NO.	COMMON MODE (L-G) IN 50 OHM SYSTEM								
	FREQUENCY-MHz								
	.01	.05	.10	.15	.50	1.0	5.0	10	30
16DRT1W3A	5	5	20	30	60	65	65	65	55
30DRT1W3	5	10	20	25	40	45	50	50	35

PART NO.	DIFFERENTIAL MODE (L-L) IN 50 OHM SYSTEM								
	FREQUENCY-MHz								
	.01	.05	.10	.15	.50	1.0	5.0	10	30
16DRT1W3A	2	10	10	25	55	60	60	60	60
30DRT1W3	5	10	35	40	60	60	50	50	35

ELECTRICAL SCHEMAT

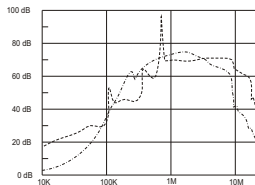


SERIES DIMENSIONS

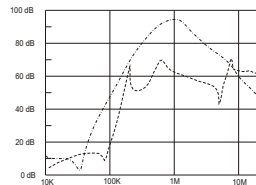
PART NO.	DIMENSIONS IN INCHES/mm							
	A	B	C	D	E	F	G	H
16DRT1W3A	8.740 222.0	5.197 132.0	1.654 42.0	7.795 198.0	3.937 100.0	9.843 250.0	7.795 198.0	0.787 20.0
30DRT1W3	10.906 277.0	7.956 202.0	2.047 52.0	9.961 253.0	6.693 170.0	7.874 200.0	9.961 253.0	0.984 25.0

INSERTION LOSS (TYPICAL)

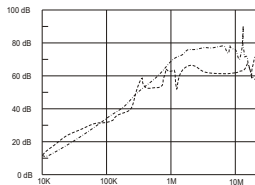
50TDS4W4 ----- COMMON MODE ----- DIFF. MODE



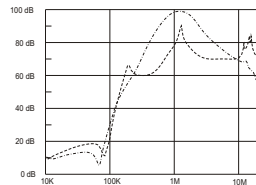
10TDT1W4 ----- COMMON MODE ----- DIFF. MODE



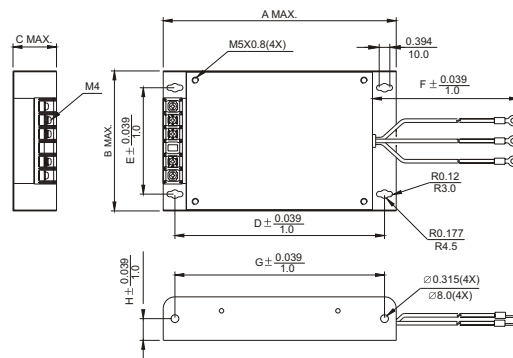
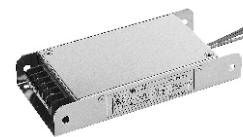
20TDT1W4 ----- COMMON MODE ----- DIFF. MODE



16DRT1W3A ----- COMMON MODE ----- DIFF. MODE



MECHANICAL CONSTRUCTION



UNIT: INCH
mm

THREE-PHASE FILTERS