

# DC SERIES TWO-STAGE HIGH PERFORMANCE FILTERS

## INTRODUCTIONS

1. Applications for UL 544 & UL 2601 health care equipment.
2. Two-stage filters provide high insertion loss for both line-to-line and line-to-ground emissions throughout the frequency range.

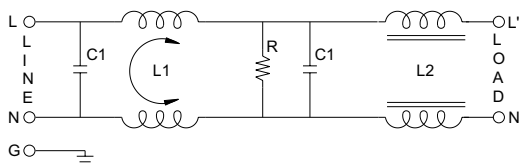
## COMPONENTS

PART NO.	C1 (uF)	L1 (mH)	L2 (uH)	R (K)
03DCCG5BM/W5BM	0.47	9.8	160	470
06DCCG5BM/W5BM	1.0	7.8	110	220
12DCCG5BM/W5BM		3.25	50	
16DCGG5BM/W5BM/S5BM		2.8	43	

## MINIMUM INSERTION LOSS IN dB

COMMON MODE (L-G) IN 50 OHM SYSTEM							
CURRENT RATING	FREQUENCY-MHz						
	.15	.50	1.0	5.0	10	30	
3A	25	30	30	25	20	8	
6A	25	35	30	20	20	8	
12A	20	25	25	20	20	10	
16A	15	15	18	18	15	10	
DIFFERENTIAL MODE (L-L) IN 50 OHM SYSTEM							
3A	45	60	60	50	45	25	
6A	55	60	60	45	45	20	
12A	40	60	60	45	40	30	
16A	35	55	55	40	35	25	

## ELECTRICAL SCHEMATIC



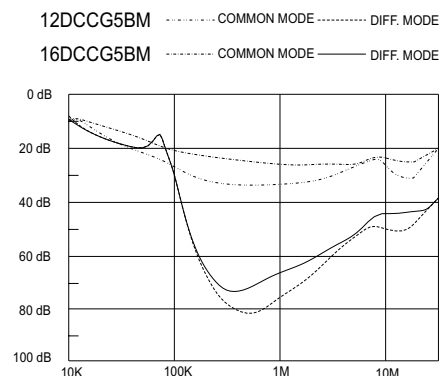
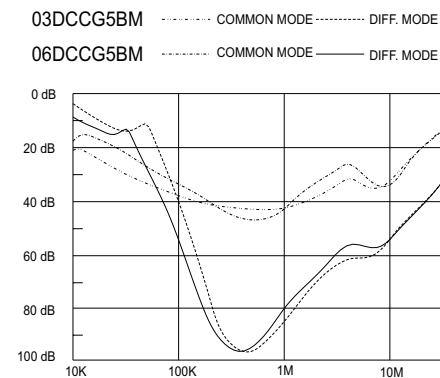
## SPECIFICATIONS

1. Maximum leakage current each line-to-ground @ 115VAC 60Hz: 2uA  
@ 250VAC 50Hz: 5uA
2. Hipot rating (one minute)  
line-to-ground: 2250VDC  
line-to-line: 1450VDC
3. Operating frequency: 50/60Hz
4. Rated voltage: 115/250VAC

## SERIES DIMENSIONS

PART NO.	DIMENSIONS IN INCHES/mm						
	A	B	C	D	E	F	G
03DCCG5BM/W5BM	2.95 75.0	3.34 84.8	2.05 52.0	2.58 65.6	1.54 39.2	—	—
06DCCG5BM/W5BM	4.06 103.0	4.49 114.0	2.22 56.5	3.76 95.5	1.83 46.4	—	—
12DCCG5BM/W5BM	5.63 143.0	6.02 152.9	2.05 52.0	5.30 134.7	1.78 45.3	—	—
16DCGG5BM/W5B/S5BM	3.90 99.0	4.31 109.5	4.72 120.0	2.01 51.0	2.62 66.5	3.39 86.0	2.28 58.0

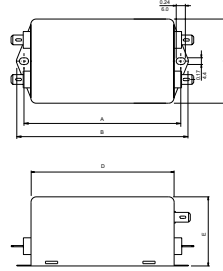
## INSERTION LOSS (TYPICAL)



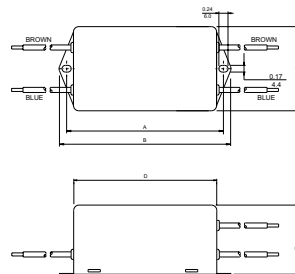
**MECHANICAL CONSTRUCTION**



CG5BM



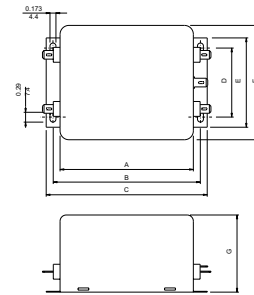
CW5BM



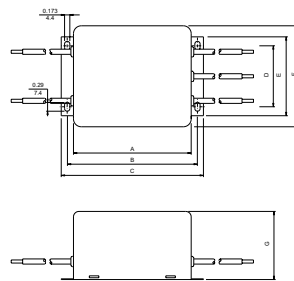
ALL WIRE LEADS 4.0" LONG MIN.



GG5BM



GW5BM



ALL WIRE LEADS 4.0" LONG MIN.



GS5BM

